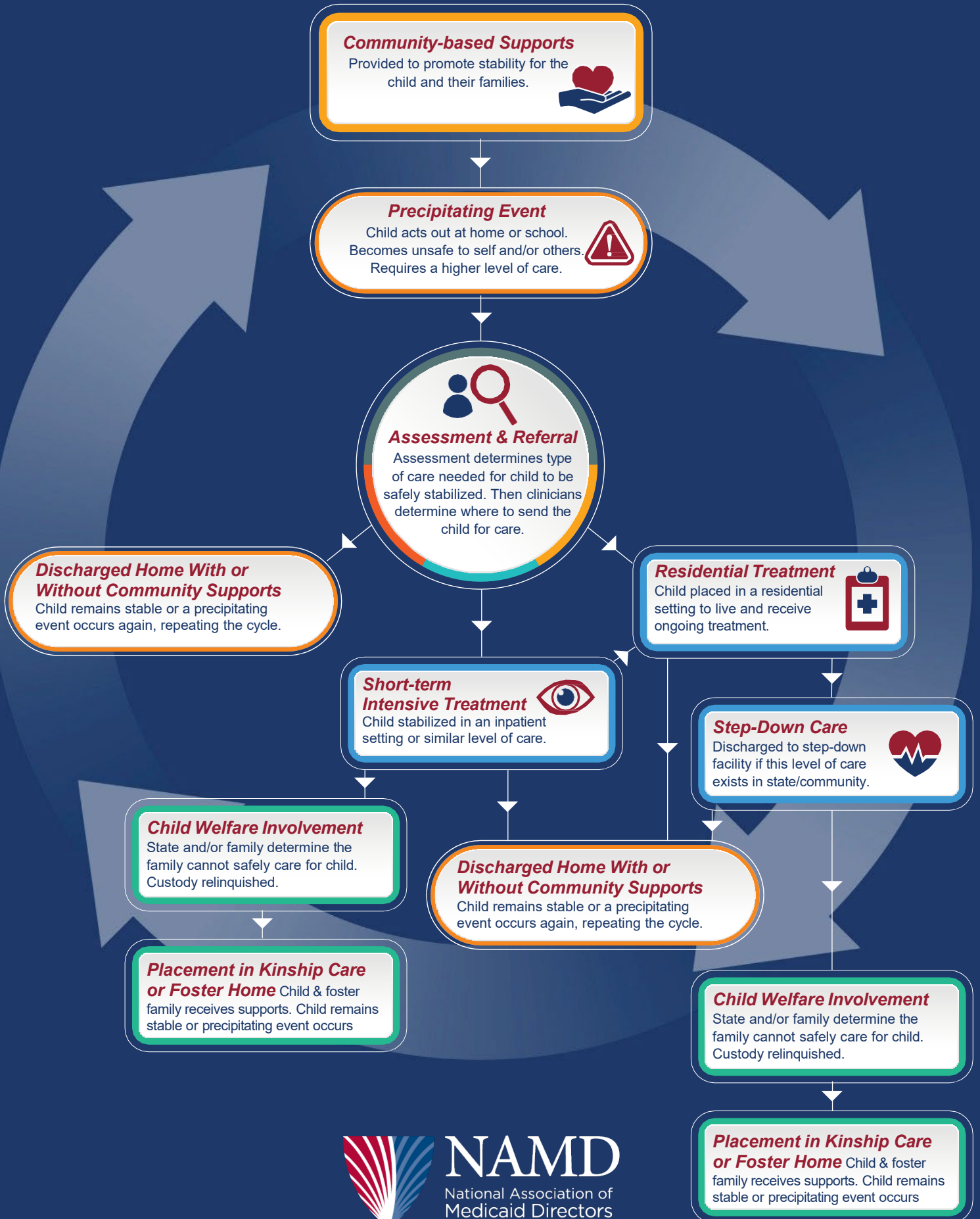


Children Living with their Families



Children in Child Welfare

Community-based Supports

Provided to promote stability for the child and their families.



Precipitating Event

Child acts out at home or school. Becomes unsafe to self and/or others. Requires a higher level of care.



Assessment & Referral

Assessment determines type of care needed for child to be safely stabilized. Then clinicians determine where to send the child for care.



Discharged to Original Foster Home

Child and foster family may or may not get community supports. Child remains stable or a precipitating event occurs

New Placement Occurs

State and/or foster family determine they cannot safely care for child. Child placed with new foster family with or without community supports. Child remains stable or precipitating event occurs again.

Residential Treatment

Child placed in a residential setting to live and receive ongoing treatment.



Short-term Intensive Treatment

Child stabilized in an inpatient setting or similar level of care.



Step-Down Care

Discharged to step-down facility if this level of care exists in state/community.



Discharged to Original Foster Home

Child and foster family may or may not get community supports. Child remains stable or a precipitating event occurs

New Placement Occurs

State and/or foster family determine they cannot safely care for child. Child placed with new foster family with or without community supports. Child remains stable or precipitating event occurs again.



NAMD

National Association of
Medicaid Directors